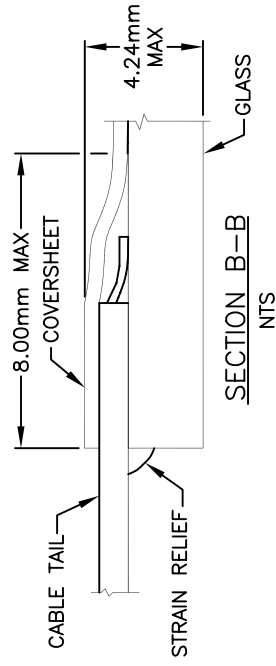
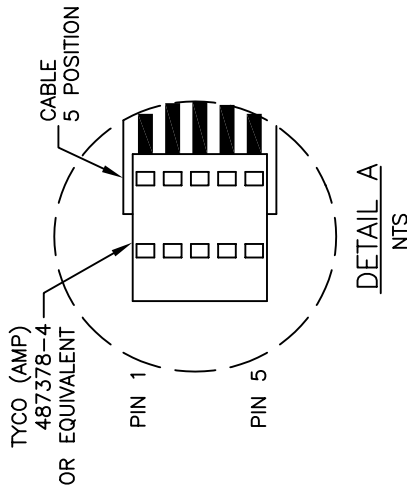
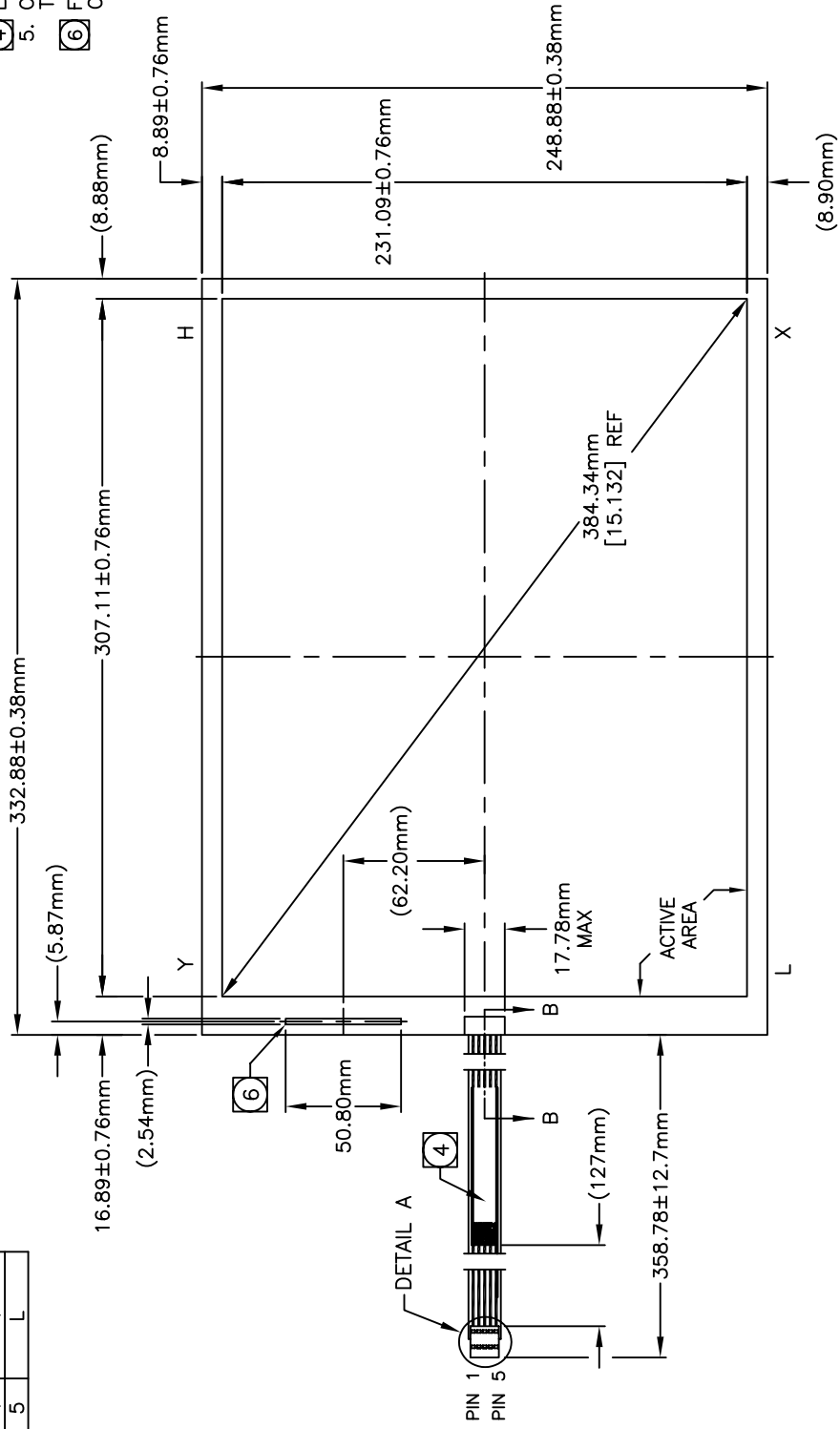


CONNECTOR PINOUT
PIN NO. DESIGNATION
1 H
2 X
3 S
4 Y
5 L

ACCUTOUCH® TOUCHSCREEN
SCN-A5-FLT15.0-Z01-OH1-R
ELO P/N: E055550

**NOTES:**

1. GLASS THICKNESS 3.18mm NOMINAL.
2. FINISHED PART THICKNESS 3.48mm NOMINAL.
3. FINISHED PART THICKNESS AT CABLE ATTACHMENT AREA 4.24mm MAX.
- 4 LABEL TO BE ATTACHED TO FRONT SIDE OF CABLE. CABLE IS ATTACHED TO THE LEFT SIDE OF TOUCHSCREEN AT CENTER POINT AS SHOWN.
- 6 FINISHED PART THICKNESS AT THE COVERSHEET CONTACT 3.86mm MAX.



UNLESS OTHERWISE SPECIFIED:  
DIMENSIONS ARE IN mm